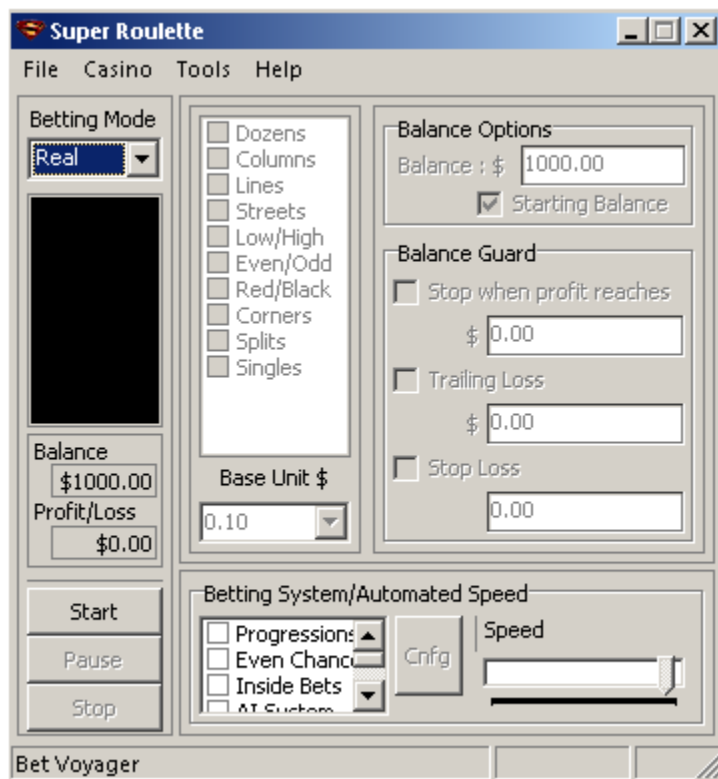


## Running the trial BOT

This trial software version of Super Roulette will allow you to test the software to ensure it is compatible with your computer, see it place bets and watch a session of play unfold. No system information is revealed – all settings for bet placement are hard coded. The BOT will simply record numbers as they are spun, spin the wheel and place bets when an opportunity arises according to the pre-configured settings. The system coded into the trial is AI.

The full version of Super Roulette uses the same coding engine; if the trial works correctly then you can be confident the full version will be compatible with your computer.

The trial is in a zip file. Upon extraction you will have four files - *SuperRoulette.exe.cm*, *CMInstall.exe*, *SuperRouletteT.exe* and *SuperRouletteT.exe.cm.ini*. All four files must be in the one folder in order for the program to open. Double click *SuperRouletteT.exe* to run and activate the program. *You will need to provide a valid email address in order to activate and use the trial.*



*Super Roulette Trial*

Both the trial and full versions of Super Roulette only work with the downloadable version of Bet Voyager casino - it WILL NOT work with the instant flash casino.

[Download](#) the casino and register an account. Once you have setup an account, login and open up the NO-ZERO roulette game, click *Demo Version*. (Please note, the trial will only play in demo mode, you cannot use the trial for real money mode.



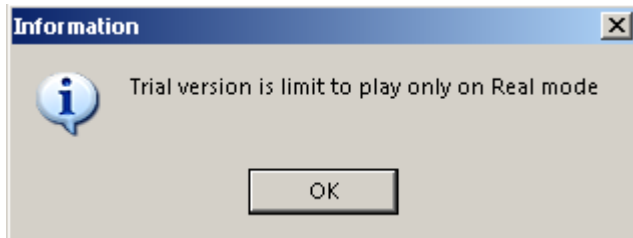
*No-ZERO roulette game*

Bet Voyager does not allow more than three spins without placing a bet. To overcome this Super Roulette places a no risk bet (one dollar on red and one dollar on black) every spin while tracking. Once a betting system is commenced the tracking bet ceases.

In order for Super Roulette to operate correctly, you need to have the casino window 'viewable' by the BOT. Screen resolution should be the standard for the video display you are using. I find it easiest to run Super Roulette with the casino window on the right and Super Roulette on the left. You do not need to have both windows separate, as long as Super Roulette can see all the betting chips and the Spin and

Rebet buttons it will operate correctly.

Open Super Roulette and you will see your Balance is hard coded at \$1000 and the Betting Mode is real. You cannot change these options; if you try and change Betting Mode you will receive the following error:

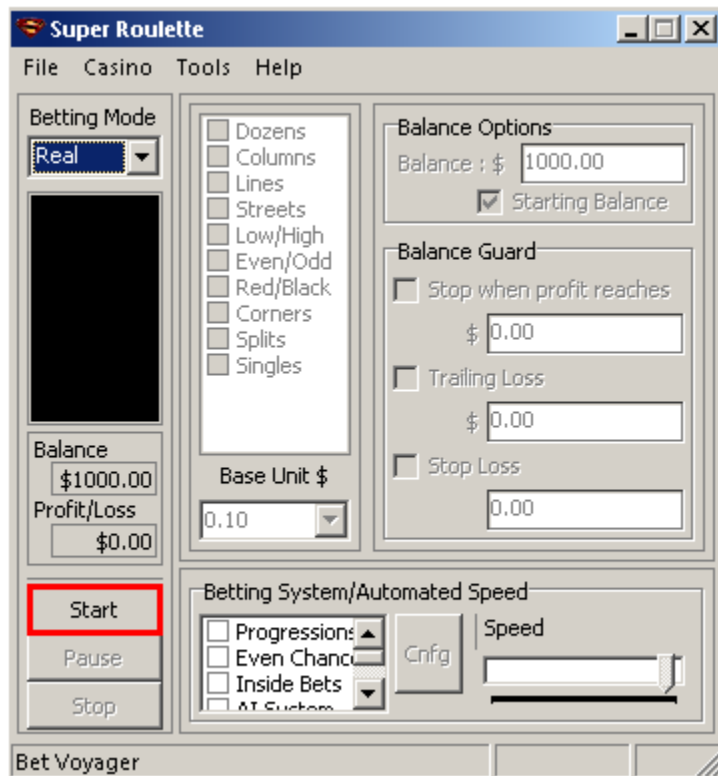


Once you are ready you MUST click spin to initiate the software. (*Super Roulette will not recognise the casino window correctly if you do not trigger the first spin manually*)



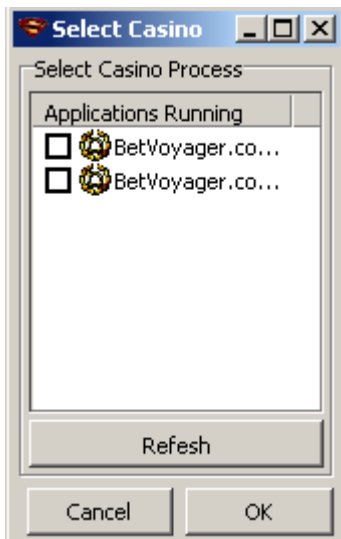
When you are ready to play, click spin...

You are now ready to start the software. While the first spin is completing, click Start on Super Roulette.



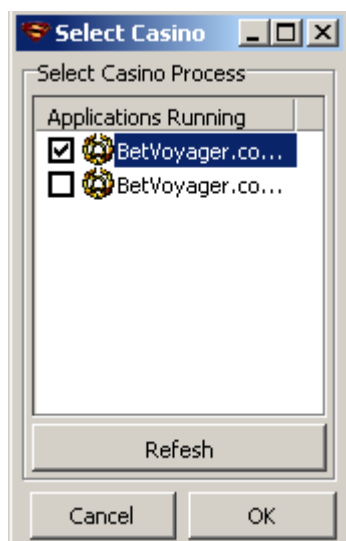
Click **Start** while the first spin is completing

This will bring up the *Select Casino* window.



*Select Casino window*

Select the process which relates to the active game window. It is generally the top one. The other process is the screen you are greeted with when you login. You can toggle between the two check boxes to confirm which the correct one is. When you choose the correct one the active game window will come to the foreground. Click OK

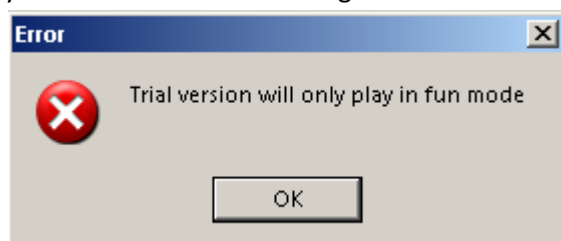


*Select Casino Process*

Super Roulette will now take control of the mouse. Do not interfere with the BOT as it may adversely affect bet placement. Super Roulette will resize the active window a little, and then move the mouse to the starting position. From here it will begin placing the no risk bets and recording the numbers as they are spun in the marquee. *Stop* and *pause* also have hotkeys – F3 and F4 respectively.

Check that the BOT is spinning the wheel without any lag and that the numbers being spun are being recognised and recorded correctly. If all looks fine then you can be confident the full version will operate correctly on your computer.

As mentioned earlier the BOT can only play in demo mode, if you try and use the software in real mode, you will receive the following error:



*\*\*Please note: the trial BOT will only place \$.10 units; no other unit size can be selected. The trial will work for 48 hours from first activation or allow 5 uses; whichever comes first.*